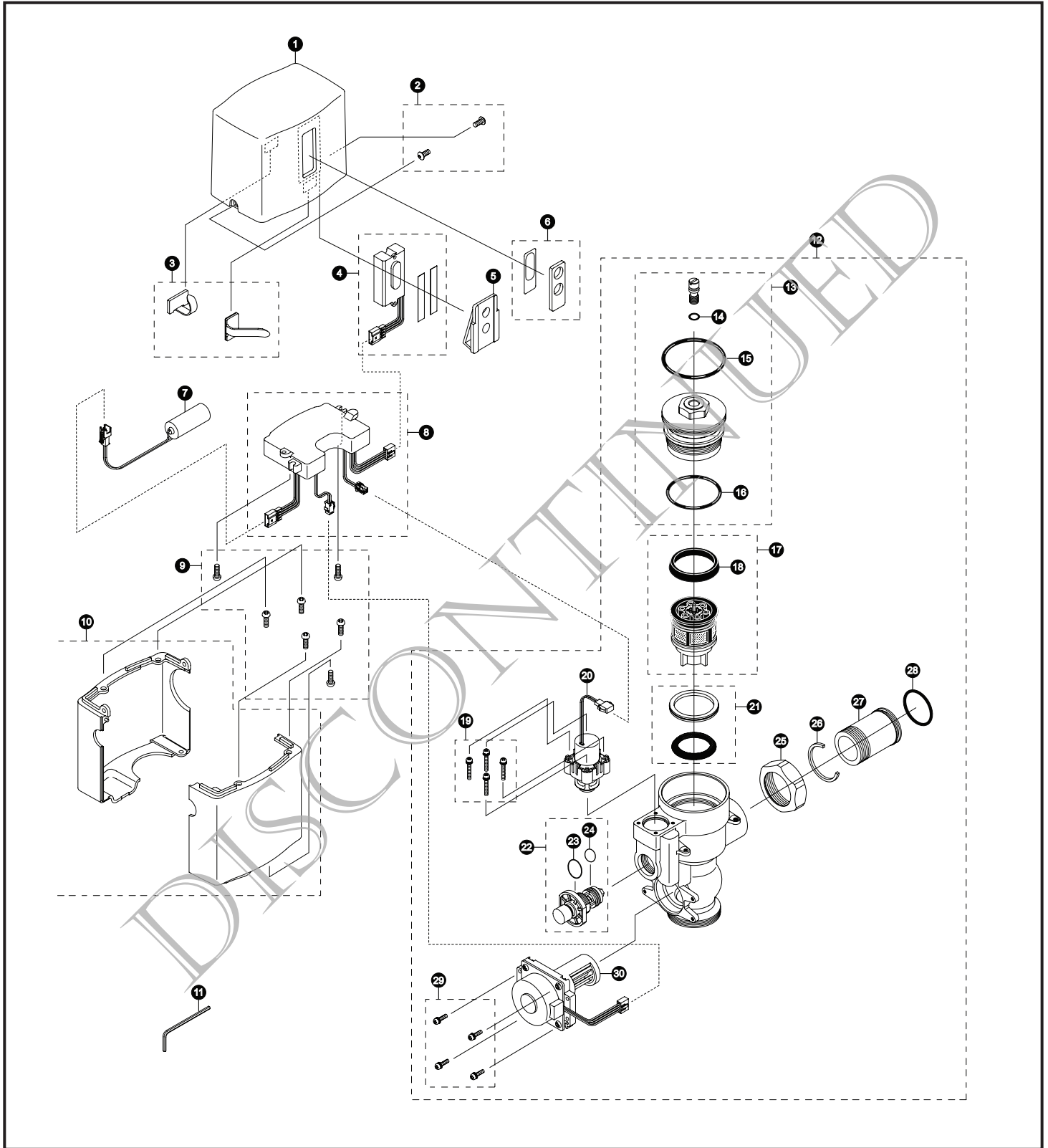


EcoPower® Sensor Toilet Flush Valve
Exposed - 1.6 Gpf
Hydro-Power Charge



**EcoPower® Sensor Toilet Flush Valve
Exposed - 1.6 Gpf
Hydro-Power Charge**

Item	Part	Description
1	TH559EDV511	Top Cover
2	THU3051	Set Screw & Allen Wrench Set
3	TH559EDV517	Clamp Set
4	TH559EDV515	Sensor Controller & Packing Set
5	TH559EDV516	Holder
6	TH559EDV514	Glass & Packing Set
7	THP3053	Back-Up Battery
8	TH559EDV518	Controller (Toilet)
9	TH559EDV513	M4 Screws (5 pieces)
10	TH559EDV512	Lower Cover Set
11	TH559EDV521	Allen Wrench
12	TH559EDV500	Valve Body For Exposed (Toilet 1.6 Gpf)
13	TH559EDV507	Valve Cap Assy (Toilet 1.6/)
14	TH305SV111	O-Rings (Cap Screw)(10 Pieces)
15	TH305SV120	O-Rings (Valve Cap)(10 Pieces)
16	TH305SV112	O-Rings (Valve Guide)(10 Pieces)
17	TH323V103	Piston Assembly (1.6 Gpf)
18	TH305SV103	U-Packing (For Piston)(10 Pieces)
19	TH559EDV301	Double Sems Screws M3 (4 pieces)
20	TH559EDV510	Solenoid Unit & Diaphragm Assy
21	TH321	Seal Washer Kit
22	TH559EDV506	Manual Flushing Button
23	THP3013	O-ring, cap (10/bag)
24	THP3242	O-ring (1/bag)
25	TH305SV113	Nut
26	TH305SV105	Locking Rings (10 Pieces)
27	TH305SV114	Tail Piece
28	TH305SV106	O-Rings (Tail Piece)(10 Pieces)
29	TH559EDV505	Double Sems Screws M3 (4 pieces)
30	TH559EDV503	Hydro-Power Generator (Toilet)

Vacuum Breaker Sets

VB9CP-32 Exposed - Top Spud (1-1/2" Outlet)

Note: For additional information, refer to the individual vacuum breaker parts sheets.

Product Number Explanations

- Flush Valve**
 (T) Fitting
 (E) Electronic
 (T) Toilet 1.6 Gpf
 (6) Exposed 24" Vacuum Breaker Tube
 (G) Dynamo (Hydro Generator)
 (N) Neutral Rough-In
 (C) Chrome Finish
 (3) 1-1/2" Outlet
 (2) Top Spud